

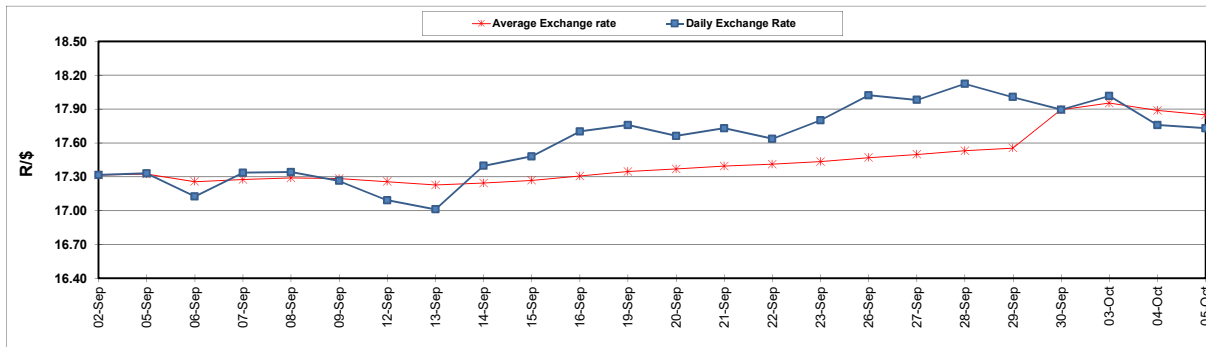
	PETROL 95 ULP	PETROL 93 ULP & LRP	DIESEL 0.05%	DIESEL 0.005%	ILL. PAR.
GAUTENG PUMP PRICE (SA c/l) AS FROM 05/10/2022	2,236.000	2,206.000	-	-	-
WHOLESALE PRICE (SA c/l) AS FROM 05/10/2022	-	-	2,406.100	2,430.500	1,699.288
SINGLE NATIONAL MAXIMUM RETAIL PRICE	-	-	-	-	2,240.000
BASIC FUEL PRICE - 05/10/2022 (SA c/l)	1,199.542	1,175.102	1,662.293	1,685.603	1,507.077
PRESS RELEASE CONTRIBUTION TO BFP 05/10/2022 - 05/10/2022 (SA c/l)	1,145.750	1,115.750	1,523.630	1,548.030	1,481.128
UNIT OVER/(UNDER) RECOVERY - 05/10/2022 (SA c/l)	(53.792)	(59.352)	(138.663)	(137.573)	(25.949)
AVERAGE BASIC FUEL PRICE 30/09/2022 - 05/10/2022	1,183.022	1,157.683	1,570.303	1,590.595	1,450.692
AVERAGE UNIT OVER/(UNDER) RECOVERY 30/09/2022 - 05/10/2022	39.229	24.818	(54.173)	(53.815)	76.187

ANALYSIS MOVEMENT OF AVERAGE OVER/(UNDER) RECOVERY

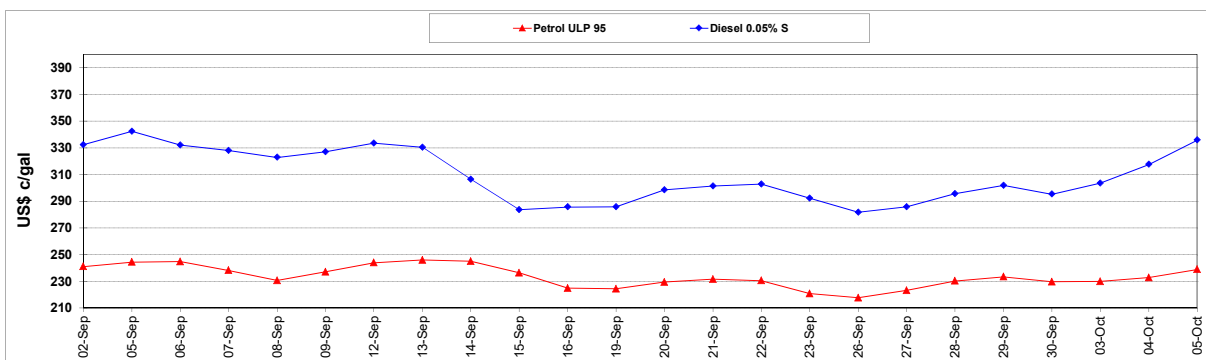
	PETROL 95	PETROL 93	DIESEL 0.05%	DIESEL 0.005%	ILL. PAR.
- MOVEMENT IN INTERNATIONAL PRODUCT PRICES	28.835	14.647	(67.968)	(67.788)	63.442
- MOVEMENT IN EXCHANGE RATE	10.393	10.170	13.795	13.973	12.744
AVERAGE UNIT OVER/(UNDER) RECOVERY 30/09/2022 - 05/10/2022	39.229	24.818	(54.173)	(53.815)	76.187

R/\$ EXCHANGE RATE - (R/\$17.7300 - 05/10/2022)

EXCHANGE RATE USED IN BASIC FUEL PRICE



INTERNATIONAL PRODUCT PRICES OF BASKET USED IN BASIC FUEL PRICE



BASIC FUEL PRICE IN SA CENTS PER LITRE

